

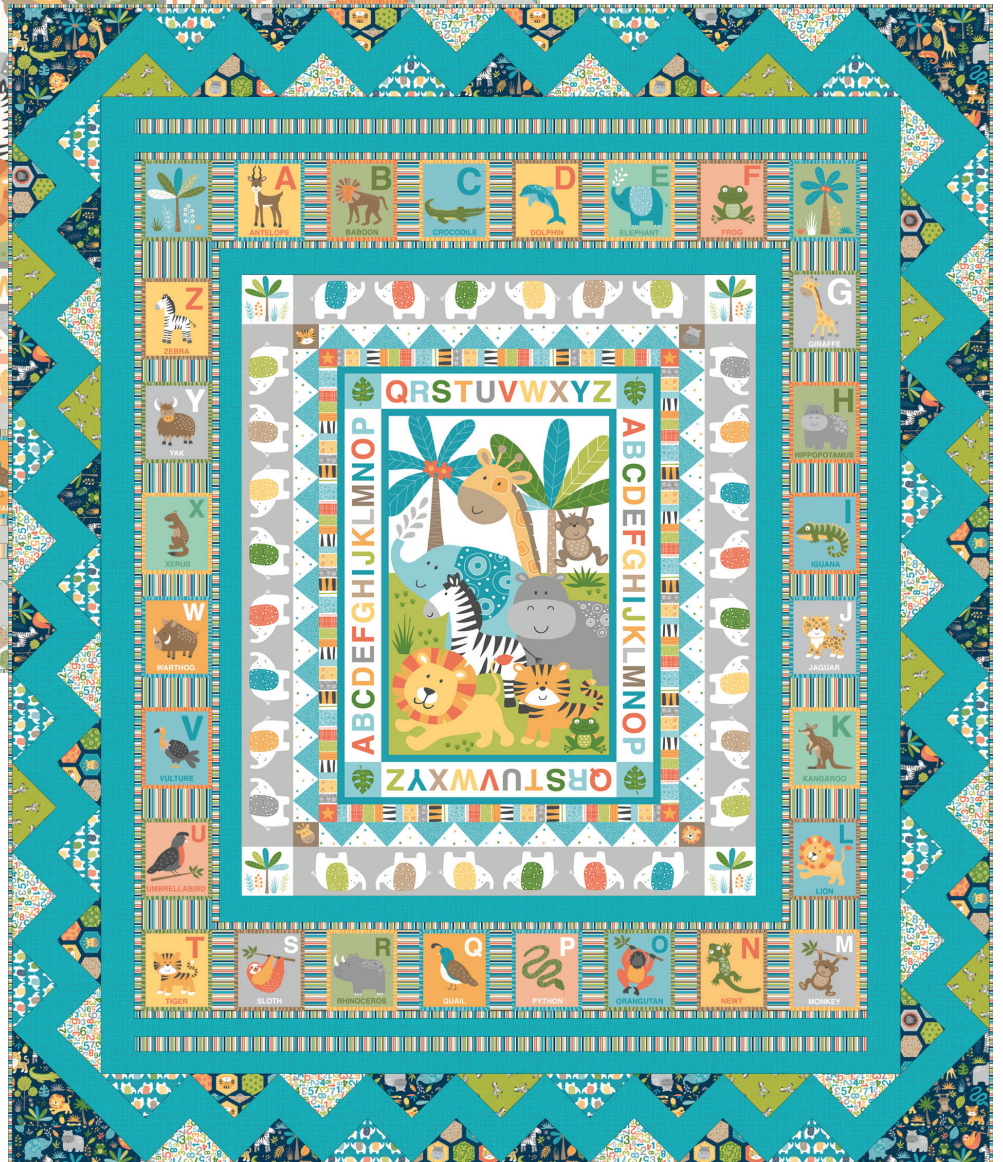
Jungle Friends Quilt

Designed by Lynne Goldsworthy of lilysquilts.blogspot.com

Finished size 66" x 78" (1.7m x 2m)



Pink Quilt



Teal Quilt

Jungle Friends Quilt

Designed by Lynne Goldsworthy of lilysquilts.blogspot.com
Finished size 66" x 78" (1.7m x 2m)

Teal quilt	Pink quilt	Amount	Cut
1525/B4	1473/S2	1 ¾ m / 2 yds	See cutting instructions
2197B	2197Q	60cm / 22"	Two 10" squares Four 7 ¼" squares (fifteen triangles)
2198B	2198P	LQ	Five 7 ¼" squares (eighteen triangles)
2199S	2199Q	4 ½ m / 4 ¾ yds	Cut into two equal lengths for the quilt back
2200B	2200Q	FQ or LQ	Four 7 ¼" squares (fourteen triangles)
2201G	2201T	FQ or LQ	Three 7 ¼" squares (eleven triangles)
2202B	2202P	LQ	Five 7 ¼" squares (eighteen triangles)
2203B	2203P	1 ¼ m / 1 ¼ yds	See cutting instructions
2204-1	2204-1	One panel	
2205B	2205P	One panel	
Wadding	1.9m x 2.2m / 74" x 86"		279 Cotton Mix 80-20 from http://www.vlieseline.com/en
Thread	Aurifil 50wt for piecing and 40wt for quilting from http://www.aurifil.com		
Starch			Optional extra see step 3 of "cutting the fabrics"

Notes:

- Make sure to visit <http://www.makoweruk.com/projects/> to ensure you are working from the most up-to-date version of the pattern
- Two panels are used in this quilt. Panels are printed onto cotton and there is inevitably some minor degree of distortion. Always cut panels to the printed line, not the grain. Although this may involve cutting slightly wonky lines at times, the design will be pulled straight by the piecing around it. Patterns using panel pieces will also generally also include directions to add sashing and/or trim to size to accommodate the fact that there may be some size inconsistencies due to printing process.
- Read the pattern in full before starting
- ¼" seams are used throughout except where stated otherwise
- Press after each seam, pressing seams open or to one side as preferred
- WOF - width of fabric - a strip of fabric cut from selvedge to selvedge
- BKG - background fabric
- FQ - fat quarter
- LQ – long quarter

Cutting the fabrics

1. Cut the fabrics as shown in the fabric requirements table and as set out below.
2. Cut the large centre panel to ¼" from the printed edge and the alphabet blocks panel into twenty-eight blocks, cutting ¼" away from the printed edge of each block.
3. Cut the 7 ¼" squares of the prints used in the triangle border in half on both diagonals to yield four triangles per square. The total number of triangles needed for each print is listed in the fabric requirements table.
NB: Since these and the triangles to be cut at step 4 will be sewn into the quilt along their bias lines, you may choose to starch the squares before cutting.
4. Cut the 10" squares of the montage print in half on the diagonal. **NB: cut one in half on the top left to bottom right diagonal and one in half on the top right to bottom left diagonal.**
5. Cut the stripe fabric as follows:
 - Nine 1" WOF strips sewn end to end and cut into two 38 ¾", two 45 ¾", two 49" and two 57 ½" lengths.
 - Three 1 ¼" WOF strips sewn end to end and cut into two 49" lengths.
 - Two 2" WOF strips cut into fourteen 6" strips
 - Two 2 ½" WOF strips cut into fourteen 5 ¼" strips
 - Seven 2 ½" WOF strips for the binding

6. Cut the linea background fabric (BKG) as follows:

- Two 2 ½" WOF strips.
- Seven 2" WOF strips. Trim two to 38 ½". Sew the remainder end to end and cut into four 49" lengths.
- Four 3 ¼" WOF strips sewn end to end and cut into two 66 ½" lengths.
- Four 7 ¼" WOF strips cut into nineteen 7 ¼" squares each cut in half on both diagonals to yield four large triangles per square.
- One 3 7/8" WOF strip cut into six 3 7/8" squares each cut in half on the diagonal to yield two small triangles per square.

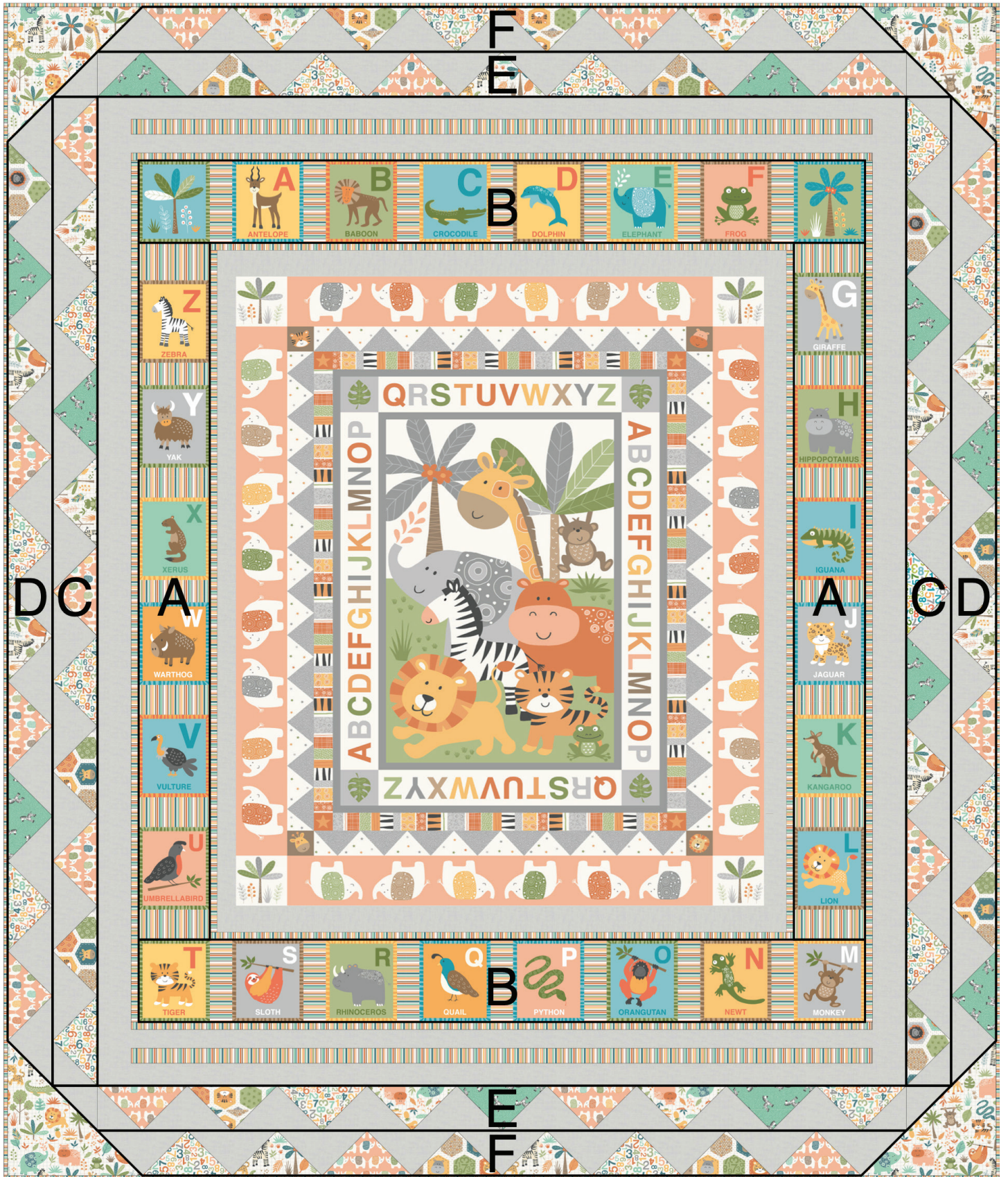
7. Cut the backing fabric into two equal lengths.

Making the quilt – see fig 1 for layout

1. Sash the sides of the panel with the 2 ½" x WOF BKG strips then the top and bottom with the 2" x 38 ½" BKG strips. Trim the whole piece to 37 ¾" wide and 45 ¾" high.
2. Sash the sides of this piece with the 1" x 45 ¾" stripe strips then the top and bottom with the 1" x 38 ¾" stripe strips.
3. Sash the blocks into two vertical strips containing six blocks and seven 2 ½" x 5 ¼" stripe strips and two horizontal strips containing eight blocks and seven 2" x 6" stripe strips. If the stripe strips are slightly too long, trim to fit. See fig 1 – the bold black lines on that diagram outline these strips – the vertical ones are marked A and the horizontal ones are marked B.
4. Sash the vertical strips to the side of the quilt top then the horizontal strips to the top and bottom.
5. Sash the sides of the quilt top with the 1" x 57 ½" stripe strips then the top and bottom with the 1" x 49" stripe strips.
6. Sew 2" x 49" strips of BKG fabric to either side of the 1 ¼" x 49" stripe strips. Sew these pieces to the top and bottom of the quilt top.
7. Sash the sides of the quilt top with the 3 ¼" x 66 ½" strip strips.
8. You will sew the print and BKG triangles into eight strips. See fig 1 – the bold black lines on that diagram outline two C, D, E, and F strips.
9. Make the strips using the following pieces:
 - C strips: eleven print triangles, ten large BKG triangles and two small BKG triangles
 - D strips: ten print triangles, eleven large BKG triangles
 - E strips: nine print triangles, eight large BKG triangles and four small BKG triangles
 - F strips: eight print triangles and nine large BKG triangles
10. Sew the C and D strips together and the E and F strips together.
11. Sew the C/D strips to the side of the quilt top and then the E/F strips to the top and bottom of the quilt top.
12. Sew the large montage triangles to the corners of the quilt top and trim to size.

Finishing the quilt

1. Sew the binding strips end to end using diagonal or straight seams as preferred and press wrong sides together along the length to make a double fold binding.
2. Sew the two pieces of backing fabric together. Make a quilt sandwich, basting together the back, the wadding and the top.
3. Quilt as desired then trim square, removing excess wadding and backing. We quilted a diagonal cross hatch of lines approximately 1 ½" apart using a cream 40wt Aurifil thread on the front and back.
4. Bind, taking care to mitre the corners.

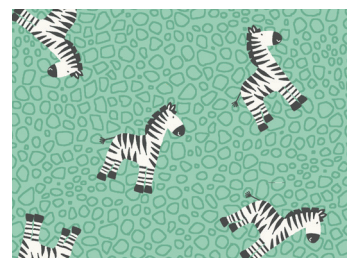




2197/Q Animal Montage



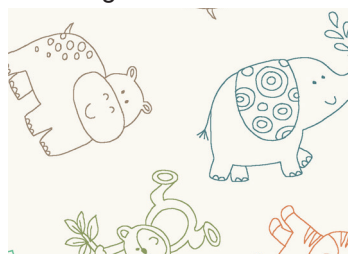
2203/P Straight Stripe



2201/T Zebra



2198/P Elephants



2199/Q Outline



2202/P Numbers



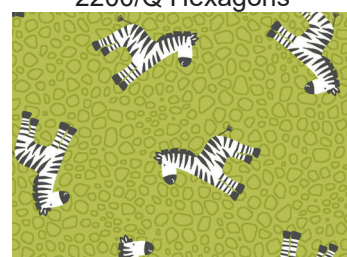
2200/Q Hexagons



2197/B Animal Montage



2203/B Straight Stripe



2201/G Zebra



2198/B Elephants



2199/S Outline



2202/B Numbers



2200/B Hexagons



2204/1 ABC Panel

Actual size 24" x 44" (60 x 112cms)



2205/P Scenic Panel

Actual size 36" x 44" (91 x 112cms)



2205/B Scenic Panel

Actual size 36" x 44" (91 x 112cms)