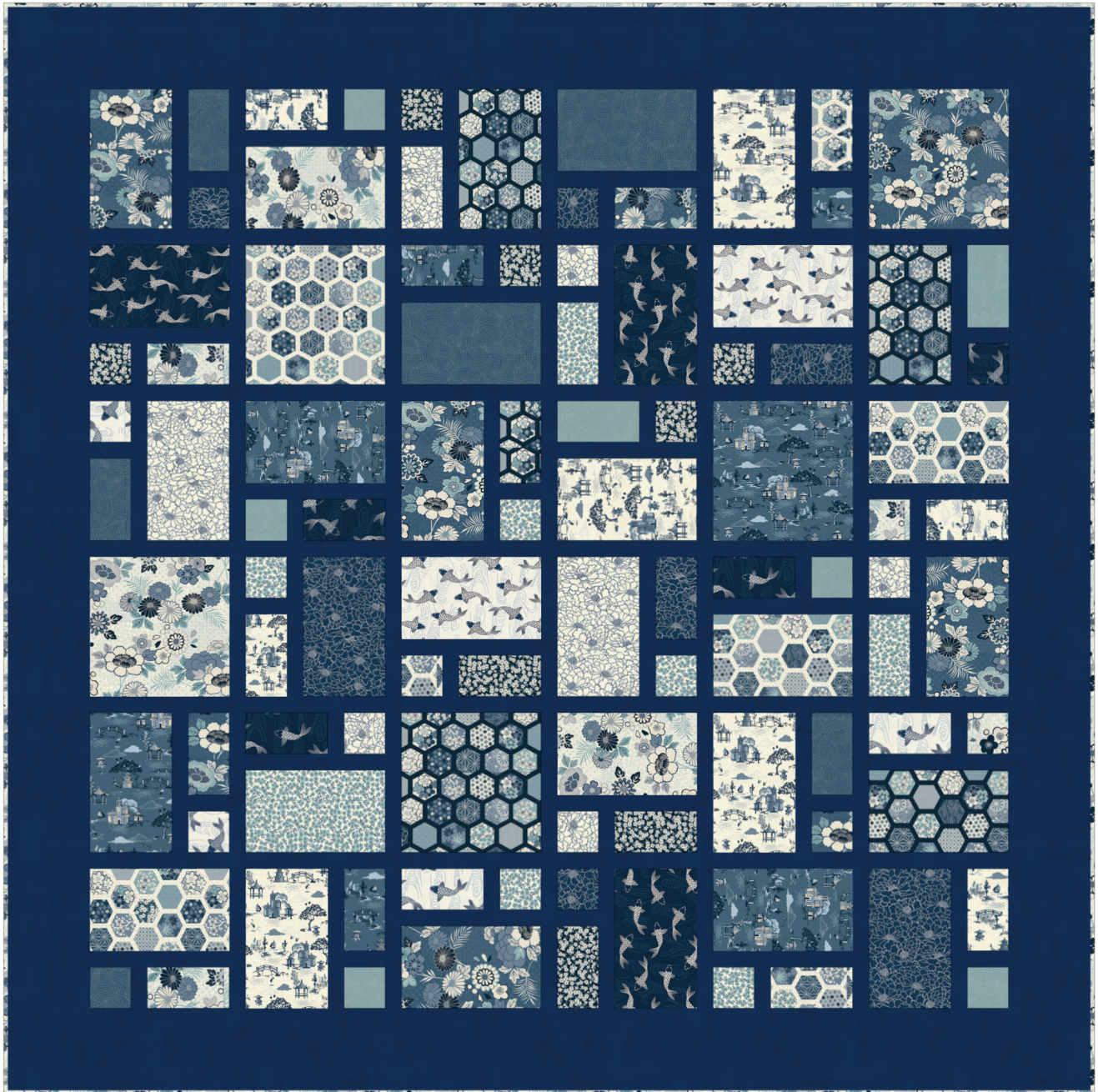


Indigo Quilt

Designed by Lynne Goldsworthy of lilysquilts.blogspot.com
1.7m square / 66" square



makower uk

Unit 14, Cordwallis Business Park, Clivemont Road,
Maidenhead, Berkshire SL6 7BU +44(0)1628 509640
sales@makoweruk.com www.makoweruk.com

a andover

Indigo Quilt

Designed by Lynne Goldsworthy of lilysquilts.blogspot.com
1.7m square / 66" square

Fabric Requirements

SKU	Description	Amount	Cut
2150B	Floral Montage	FQ	One 9" square Four 9" x 5 ½" rectangles Two 3" x 5 ½" rectangles One 3" square
2150Q	Floral Montage	FQ	One 9" square Two 9" x 5 ½" rectangles Two 3" x 5 ½" rectangles Two 3" squares
2150Q	Floral Montage	50 cm / ½ yd	Seven 2 ½" WOF strips for binding
2151B	Hexagons	FQ	One 9" square Three 9" x 5 ½" rectangles One 3" x 5 ½" rectangle
2151Q	Hexagons	FQ	One 9" square Three 9" x 5 ½" rectangles Two 3" x 5 ½" rectangles One 3" square
2152B	Koi	FQ	Three 9" x 5 ½" rectangles Three 3" x 5 ½" rectangles One 3" square
2152Q	Koi	F8th	Two 9" x 5 ½" rectangles Two 3" x 5 ½" rectangles Two 3" squares
2153B	Scene	FQ	One 9" square Three 9" x 5 ½" rectangles Two 3" x 5 ½" rectangles One 3" square
2153Q	Scene	FQ	Four 9" x 5 ½" rectangles Four 3" x 5 ½" rectangles
2153Q	Scene	4 m / 4 ¼ yds	Two Equal Lengths for Backing
2154Q	Chrysanthemum	F8th	Two 9" x 5 ½" rectangles One 3" x 5 ½" rectangle Four 3" squares
2154B	Chrysanthemum	F8th	Two 9" x 5 ½" rectangles Two 3" x 5 ½" rectangles Three 3" squares
2155B	Blossom	F8th	Three 3" x 5 ½" rectangles Five 3" squares
2155Q	Blossom	F8th	One 9" x 5 ½" rectangle Two 3" x 5 ½" rectangles Five 3" squares
2156B3	Sashiko	F8th	Two 3" x 5 ½" rectangles Five 3" squares
2156B7	Sashiko	F8th	Two 9" x 5 ½" rectangles Three 3" x 5 ½" rectangles One 3" square
1473/B10	Linen Texture(BKG)	2 m / 2 yds	See cutting instructions
Wadding; 1.9m square/ 74" square 279 Cotton Mix 80-20 from http://www.vlieseline.com/en			
Threads; Aurifil 50wt for piecing and 40wt for quilting from http://www.aurifil.com			

Notes:

- Make sure to visit <http://www.makoweruk.com/projects/> to ensure you are working from the most up-to-date version of the pattern
- Read the pattern in full before starting
- 1/4" seams are used throughout except where stated otherwise
- Press after each seam, pressing seams open or to one side as preferred
- WOF - width of fabric - a strip of fabric cut from selvedge to selvedge
- WOFQ – a strip of fabric cut from selvedge to centre cut in the case of a FQ or F8th
- BKG - background fabric

Cutting the fabrics

1. Cut the fabrics as shown in the fabric requirements table. Diagram A shows how the pieces required can be cut from a FQ and diagram B shows how the pieces required can be cut from a F8th - these diagrams just give an indication of how to cut the pieces required by first cutting the FQs and F8ths into WOFQ strips. Refer to the fabric requirements table to see how many pieces of which size are actually to be cut from each fabric.
2. Cut the BKG fabric as follows:
 - Sixteen 1 1/2" WOF strips each cut into four 9" and two 3" lengths.
 - Seven 1 1/2" WOF strips sewn end to end and cut into five 56 1/2" lengths.
 - Six 5 1/2" WOF strips sewn end to end and cut into two 56 1/2" and two 66 1/2" lengths.

Making the quilt

1. This quilt top can be made either by following the fabric layout in the main quilt image or your own choice of fabric layout. To make each of the thirty-one pieced blocks, sash together a 3" square and a 3" x 5 1/2" rectangle together using a 1 1/2" x 3" strip of BKG fabric.
2. Sash each of these pieces to the side of a 5 1/2" x 9" rectangle using a 1 1/2" x 9" strip of BKG fabric.
3. Sash the blocks into six rows of six using five 1 1/2" x 9" strips of BKG fabric per row.
4. Sash the six rows together using the 1 1/2" x 56 1/2" strips of BKG fabric.
5. Sash the sides of the quilt top with the 5 1/2" x 56 1/2" then the top and bottom with the 5 1/2" x 66 1/2" strips of BKG fabric.

Finishing the quilt

1. Sew the binding strips end to end using diagonal or straight seams as preferred and press wrong sides together along the length to make a double fold binding.
2. Sew the two pieces of backing fabric together. Make a quilt sandwich, basting together the back, the wadding and the top.
3. Quilt as desired then trim square, removing excess wadding and backing. We quilted a diagonal cross hatch of lines approximately 1 1/2" apart using a dark blue 40wt Aurifil thread on the front and back.
4. Bind, taking care to mitre the corners.

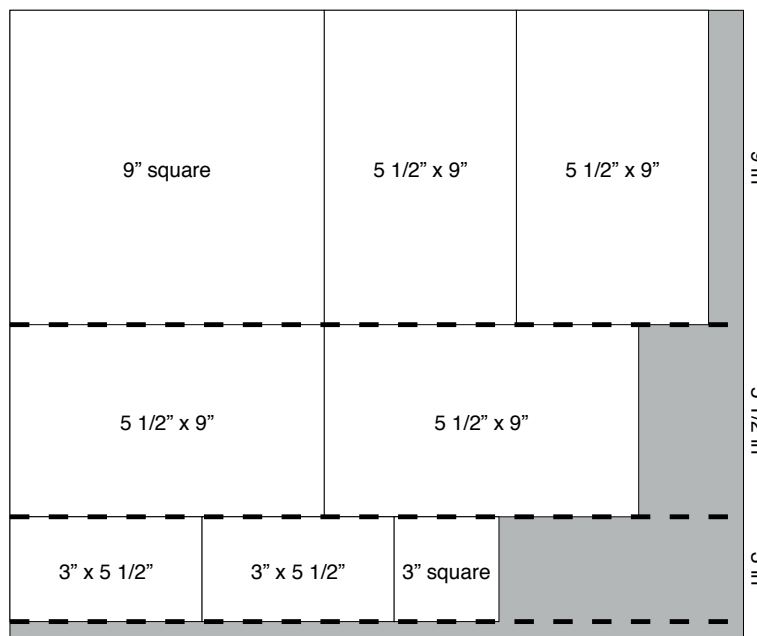


Diagram A

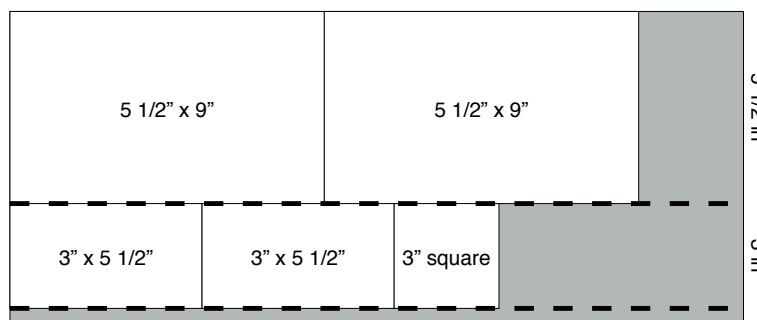


Diagram B



2150/Q Floral Montage



2155/Q Blossom



2152/B Koi



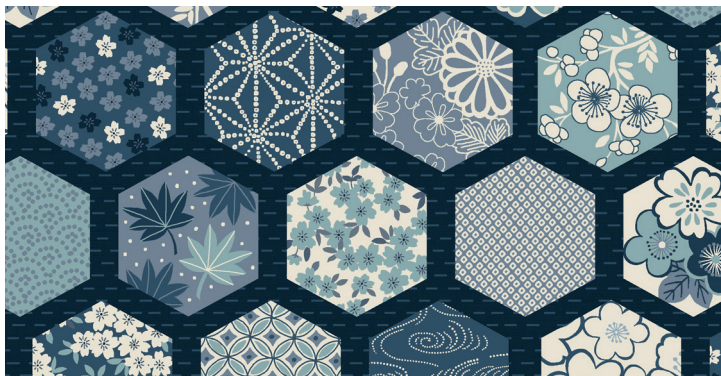
2155/B Blossom



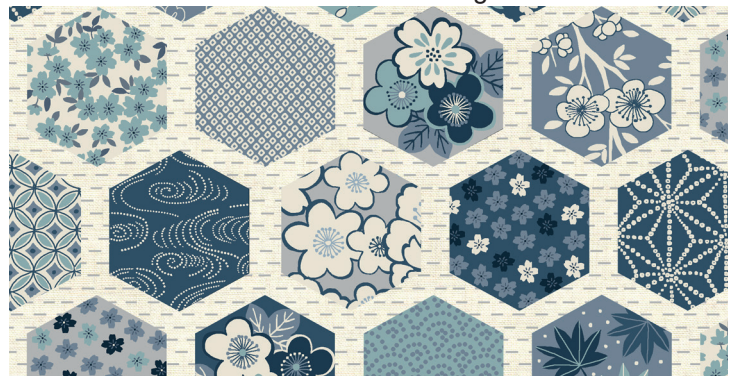
2152/Q Koi



2150/B Floral Montage



2151/B Hexagons



2151/Q Hexagons



2153/Q Scene



2156/B3 Sashiko



2154/B Chrysanthemum



2156/B7 Sashiko



2154/Q Chrysanthemum



2153/B Scene